



Chief Patron

Hon. Dr. T. J. Sawant

Founder secretary, JSPM & TSSM

Convener

Dr. Avinash M. Badadhe

Director, JSPM's RSCOE, Pune-33

Co-Convener

Dr. S. N. Khan

HoD, Mech. Engg. Dept.

Coordinator

Dr. S. S. Pimpale

Associate Professor

Dr. P. D. Patil

Associate Professor, Mech. Engg. Dept., RSCOE, Pune

Prof. Chandan M. N.

In - Charge HoD A & R

Organizing Committee

Dr. J. A. Hole

Dr. R. R. Arakerimath

Dr. V. T. Tale

Dr. D. M. Mate

Dr. S. B. Dhage

Dr. P. R. Sonawane

Dr. P. S. Patil

Dr. M. A. Ahire

Dr. Shivesh Kumar

Dr. R. S. Rai

Prof. S. R. Desai

Dr. S. M. Dhaneshwar

Dr. N. G. Jawarkar

Dr. N. S. Navagale

Dr. Ashish Kumar

Prof. S. J. Jagtap

Prof. J. A. Kute

Prof. P. L. Firke

Prof. R. S. Sundage

Dr. Y. U. Chapke

Prof. S. K. Vitnor

Prof. A. S. Umrikar

Prof. A. R. Joshi

Prof. D. M. Kupade

Prof. A. R. Deveshette

Prof. S. A. More

Prof. O. G. Kulkarni

Prof. P. T. Thorve

Prof. R. V. Dalvi

Dr. Ravi Kumar

Dr. R. S. Mahale

Prof. A. V. Shivashimpi

Prof. S. A. Panikkasseri



JAYAWANT SHIKSHAN PRASARAK MANDAL'S Rajarshi Shahu College of Engineering

(An Autonomous Institute Affiliated to Savitribai Phule Pune University,
Approved by AICTE, Accredited by NBA (UG Programs),
Accredited by NAAC with "A" Grade)

One Week Industry Supported Faculty Development Training Program (Offline Mode) on

"Artificial Intelligence (AI) in Mechanical Engineering"

Organized by

Dept. of Mechanical Engineering,
Dept. of Automation & Robotics,
Mass IT Solutions, Pune
& SAEINDIA- Western Section

15th June to 19th June 2026

Venue: Department of Mechanical Engineering
JSPM's Rajarshi Shahu College of Engineering (RSCOE),
Tathawade, Pune – 411033

In Association with



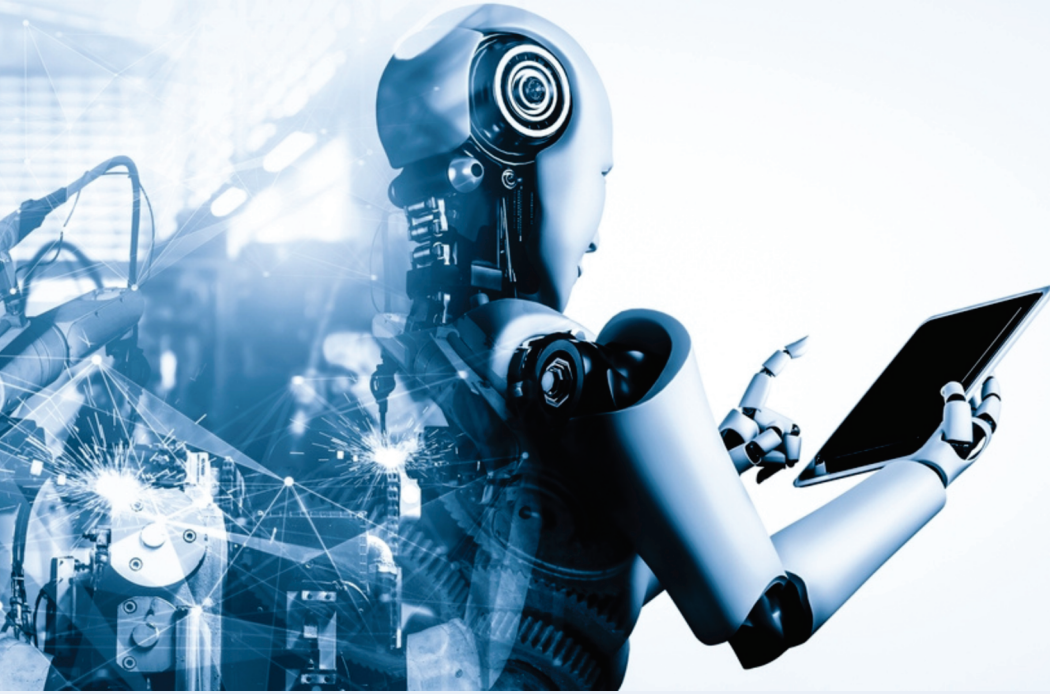
About the Institute

JSPM's Rajarshi Shahu College of Engineering (RSCOE), Tathawade, Pune is one of the premier engineering institutions in Maharashtra, committed to excellence in technical education, research, innovation and industry collaboration. The institute is accredited multiple times by NBA and NAAC accreditation with "A" Grade, offering undergraduate, postgraduate and doctoral programs across various engineering disciplines. The institute focuses on Outcome-Based Education (OBE), interdisciplinary learning, innovation, entrepreneurship and sustainable development aligned with the National Education Policy (NEP 2020).

About the Department of Mechanical Engineering

The department of Mechanical Engineering incepted in the year of 2002 with an intake of 60 students at Under Graduate (B-Tech) level and intake increased to 120 students (2006) and 180 (2013). The department also offers Post Graduate Courses, M-Tech. in (Design Engineering). The department has also recognized as Ph.D Research Centre in year the 2012. The Department has balanced combination of experienced and qualified faculty members along with the young, dynamic and dedicated faculty members. The department has fully fledged 15 laboratories & Workshop with state of art technology equipment's and they are armed with the recent software highly demanded by the employers. The Department of Mechanical Engineering always has emphasis to impart the recent trends to make the students capable to take the challenges to meet the needs of current industrial Scenario. The Department of Mechanical Engineering stand committed to technical, moral and intellectual growth of the students and provides the best possible job placement through the training and placement cell. The Department of Mechanical Engineering aims to transform the raw intelligent input into committed engineering graduates and to explore the hidden capabilities of the students towards the best leadership and technological management strength which makes them future successful entrepreneur.





About the Department of Automation & Robotics Engineering

The department is recently established by the Institute from A.Y. 2021-22 with a UG program of intake capacity of 60. This program is approved by AICTE, New Delhi and Affiliated to the Savitribai Phule Pune University. The department is established to meet the growing demand for trained engineers in the field of Robotics and industrial Automation. The Department has a Centre of Excellence in Robotics and Automation which is established in association with TATA. Automation Ltd (TAL), Pune. It has the Centre of Excellence in Mechatronics established in association with Nayan Electronics, Pune. The department is also featured with Centre for Training in IoT, ML & AI in association with India First Robotics, Pune.

About the FDP

Artificial Intelligence (AI) is transforming the manufacturing and engineering landscape by enabling intelligent decision-making, predictive maintenance, quality optimization, smart manufacturing, autonomous systems and sustainable industrial practices. Mechanical engineers are increasingly expected to integrate AI tools and techniques into product design, manufacturing processes, thermal systems, maintenance strategies, supply chain management, and industrial automation. This FDP aims to bridge the gap between traditional mechanical engineering education and the emerging AI-driven industrial ecosystem by providing faculty members with hands-on exposure to AI technologies, tools, applications, and research opportunities.



Major Topics to be Covered

- ▶ Day 1: Theme: Python Programming
Engineering Design Calculations.
- ▶ Day 2: Theme: Data Science
CNC Machine Data Analytics
- ▶ Day 3: Theme: Machine Learning
Predictive Maintenance
- ▶ Day 4: Theme: Predictive Maintenance
Defect Detection & Quality Inspection
- ▶ Day 5: Theme: Defect Detection &
Quality Inspection
Smart Manufacturing & Engineering
Documentation



Who Can Attend ?

- ▶ Faculty Members
- ▶ Researchers
- ▶ Industry Professionals
- ▶ Students

Important Dates for Registrations

- ▶ Last Date of Registration: 12/06/2026
- ▶ Registration Fees: Rs.500/-

Registration Link :

<https://forms.gle/ZqcwDA2MaxkRqbBNA>

Scan for registration



UPI ID: rajudalvi09@oksbi
Amount: ₹500.00

Contact Persons

Prof. P. L. Firke (9860428624)

Prof. R. V. Dalvi (8275265834)

Prof. A.V. Shivashimpi (9731165143)

